

Lepanthes hirpex Luer & Escobar, sp. nov.

Planta mediocris, foliis ovatis inflorescentia racemosa congesta disticha longipedicellata longioribus, sepalis ovatis obtusis, petalis transverse oblongis, labelli lamina ellipticis apice ciliatis, connectivis cuneatis, sinu obtuso cum appendice late ovoidea pubescenti.

Plant medium in size, epiphytic, caespitose; roots slender. Ramicauls slender, erect, 5-7 cm long, enclosed by 5-6 close, microscopically ciliate, lepanthiform sheaths. Leaf erect, thickly coriaceous, ovate, subacute, 27-42 mm long, 18-25 mm wide, the rounded base abruptly contracted into a petiole 2-3 mm long. Inflorescence a congested, distichous, long-pedicellate, successively flowered raceme up to 10 mm long, borne behind the leaf by a filiform peduncle 10-20 mm long; floral bract 1-1.5 mm long, echinate; pedicel 3-4 mm long; ovary 1.75 mm long; sepals yellow, suffused with red along the mid-vein, ovate, obtuse, the dorsal sepal 3 mm long, 2 mm wide, connate to the lateral sepals for 1 mm, the lateral sepals oblique, connate 1.5 mm, 3 mm long, 2.75 mm wide together; petals yellow, suffused with red medially, microscopically pubescent, transversely oblong-bilobed, 1 mm long, 3.75 mm wide, the lobes subequal, oblong with rounded apices; lip orange-brown, the blades elliptical-oblong, lightly concave, 1.2 mm long, with obtuse ends, glabrous except for ciliate apices, the connectives cuneate, the narrow body connate to



Lepanthes hirpex

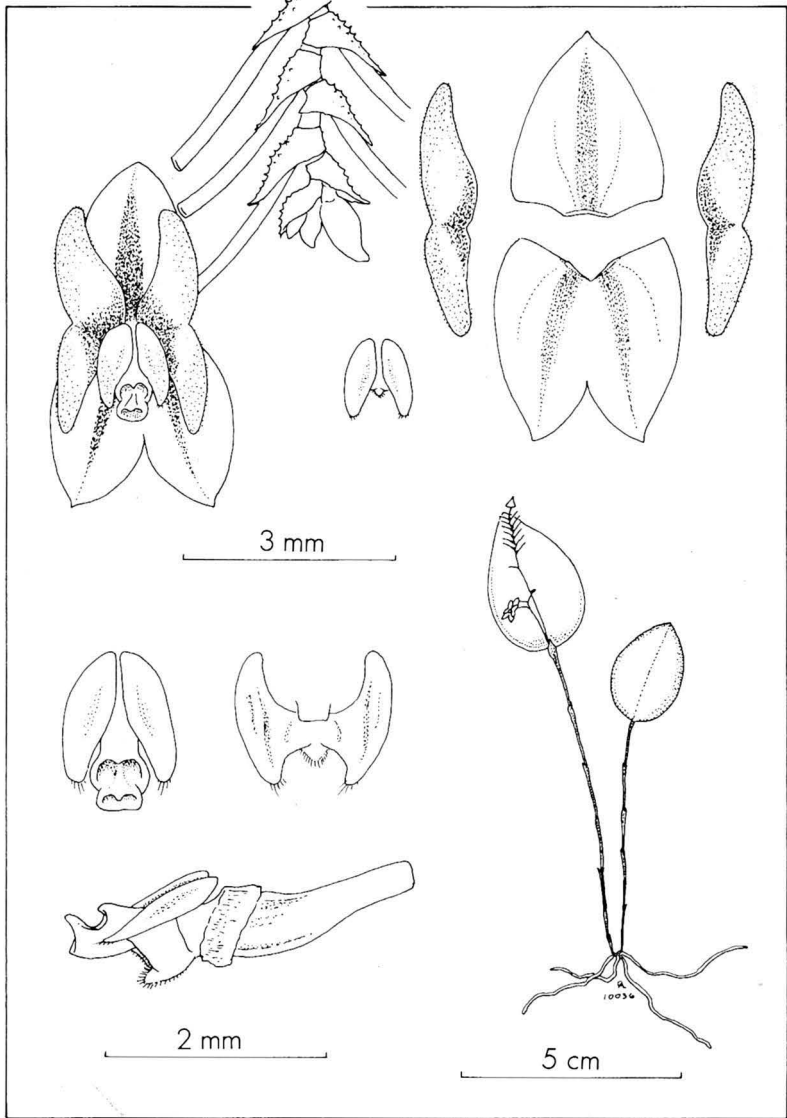


Illustration: Carlyle A. Luer

Lepanthes hirpex

the base of the column, the sinus obtuse with a broadly ovoid, pubescent appendix; column 1.2 mm long, the anther dorsal, the stigma apical.

ETYMOLOGY: From the Latin *hirpex*, "a rake," in reference to the appearance of the long-pedicellate rachis.

TYPE: *COLOMBIA*: Dept. of Antioquia: Munic. of Medellín: Boquerón, alt. 2200-2500 m, collected April 1983 by E. Acevedo, flowered in cultivation by L. & J. Posada at Colomborquideas, El Retiro, 29 April 1984, *R. Escobar 3264* (Holotype: JAUM; Isotype: COL, MO), C. Luer illustr. 10036.

This species is similar to *Lepanthes larvina* Luer & Escobar but differs in the deeply

connate lateral sepals, broader lobes of the petals, and an appendix in the sinus of the lip instead of on the external surface below the sinus.